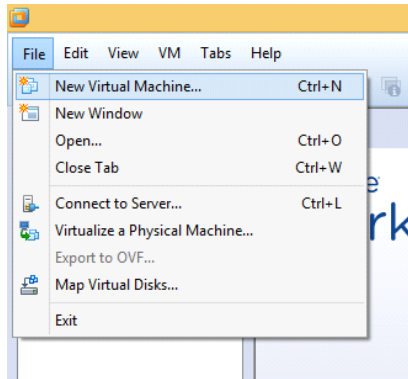


PRACTICAL NO. 2

IMPLEMENT VMWARE ESXi WITH vCENTER SERVER

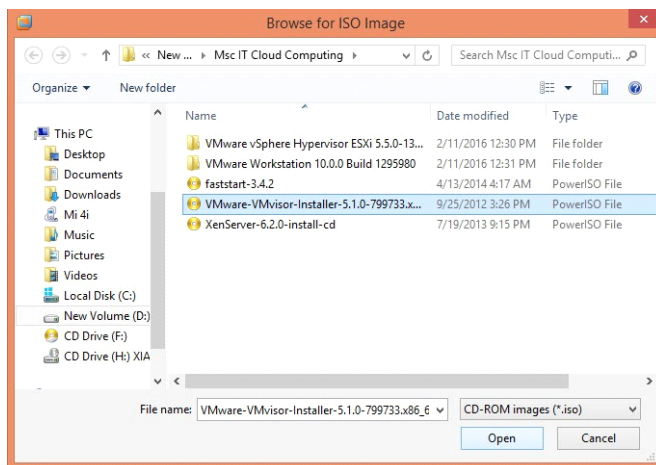
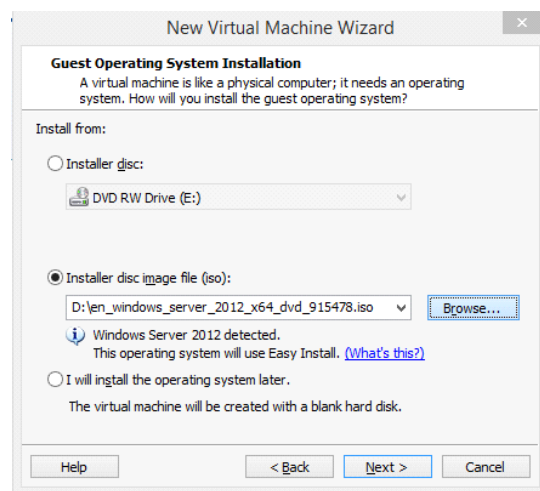


Create a new virtual machine in VMWare Workstation.

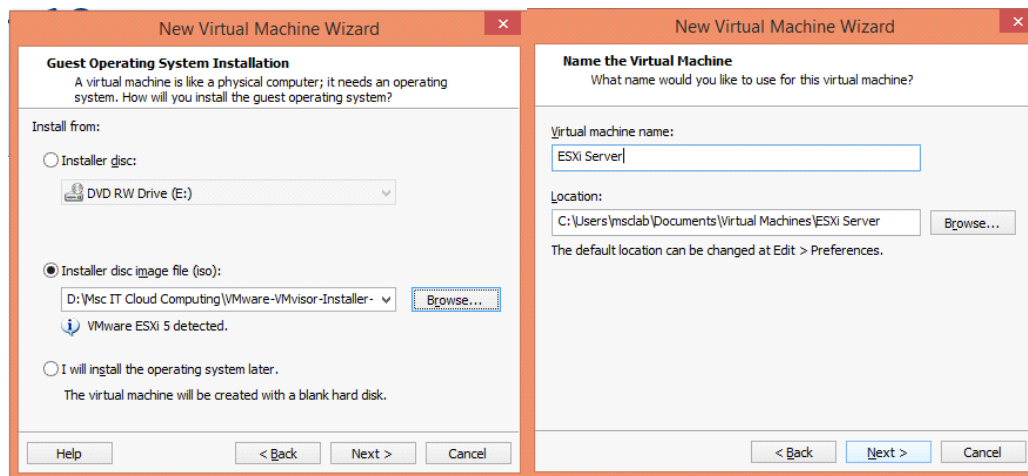
File - New Virtual Machine...

In the New **Virtual Machine Wizard** select the **“Typical”** option and click on **“Next”**.

In the next screen click on **“Browse...”** to select the **iso** file for the VM.



Select the “**VMware-VMvisor-installer-5.1.0.....iso**” file. Click on “**Open**”.



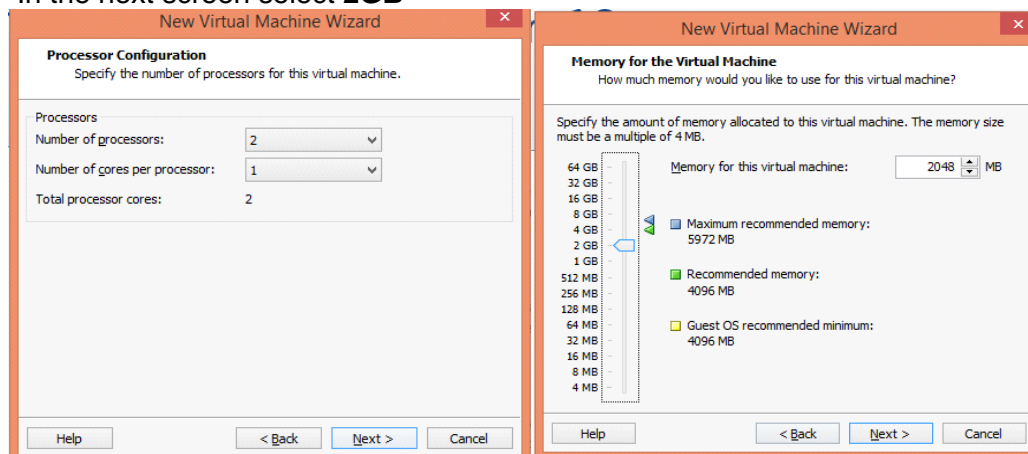
Click on “**Next**” button.

In the next screen name the VM as “**ESXi Server**”.

Click on “**Next**” button.

Keep the **Processor Configuration** default and click on “**Next**”.

In the next screen select **2GB**



Select memory and click on “**Next**” button.

Select **Network Type** as “**Use bridged networking**” and click on “**Next**”.

In the next screen select the **Recommended I/O Controller** “**LSI Logic**”.

Click on the “**Next**” button.

New Virtual Machine Wizard

Network Type
What type of network do you want to add?

Network connection

☒ Use bridged networking
Give the guest operating system direct access to an external Ethernet network. The guest must have its own IP address on the external network.

☐ Use network address translation (NAT)
Give the guest operating system access to the host computer's dial-up or external Ethernet network connection using the host's IP address.

☐ Use host-only networking
Connect the guest operating system to a private virtual network on the host computer.

☐ Do not use a network connection

Help < Back Next > Cancel

New Virtual Machine Wizard

Select I/O Controller Types
Which SCSI controller type would you like to use?

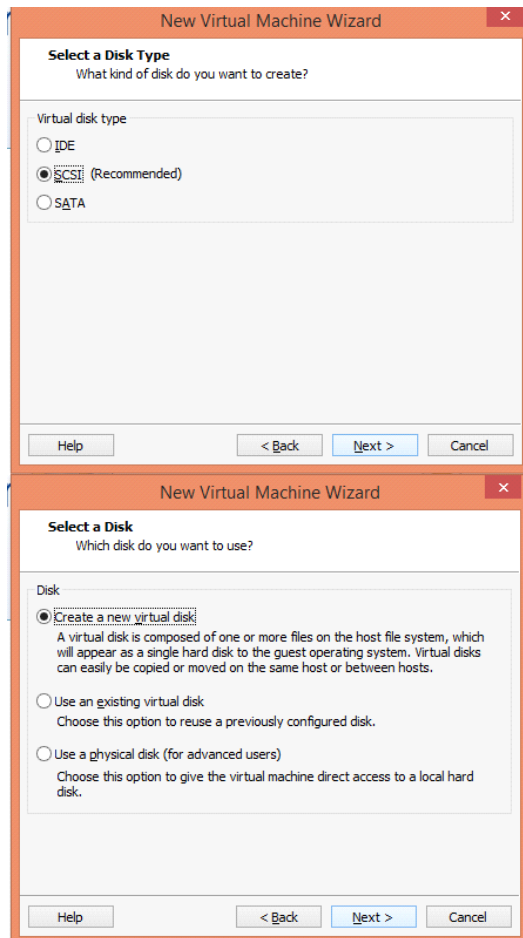
I/O controller types

SCSI Controller: ☐ BusLogic (Not available for 64-bit guests)

☒ LSI Logic (Recommended)

☐ LSI Logic SAS

Help < Back Next > Cancel



Select the Disk Type as “**SCSI (Recommended)**” and click on “**Next**”.

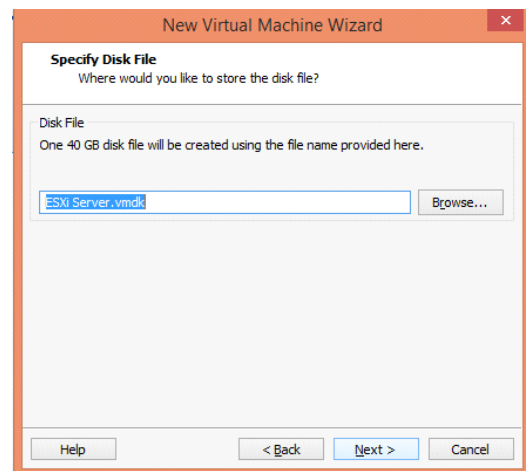
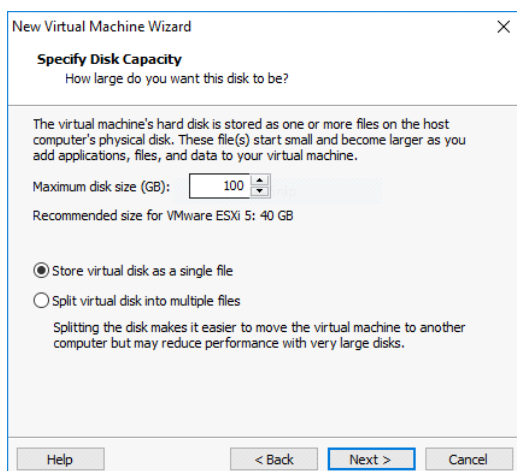
In the next screen select “**Create a new virtual disk**” option, then click on “**Next**” button.

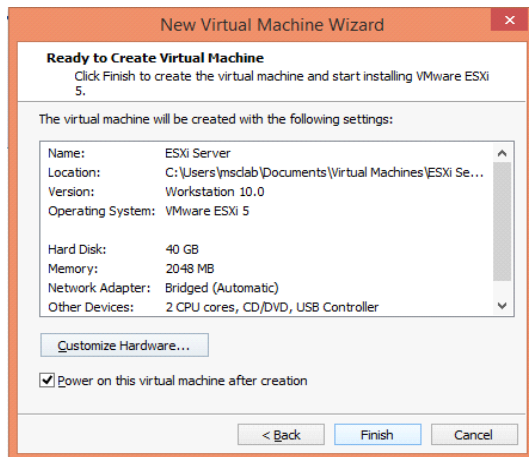
Select Disk Capacity as “**Store virtual disk as a single file**”.

Click on “**Next**”.

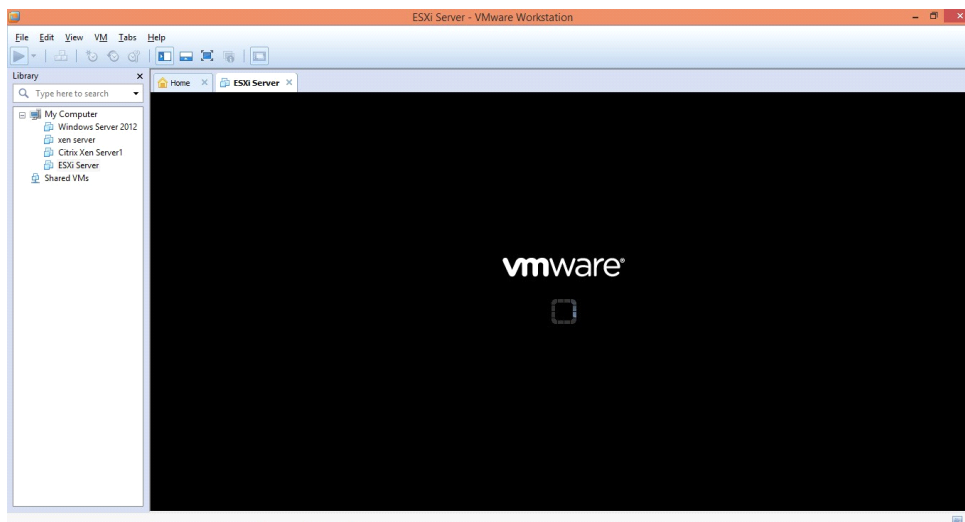
In next window leave the Disk file name **default** and click on “**Next**”.

Give Maximum size as 100 GB.

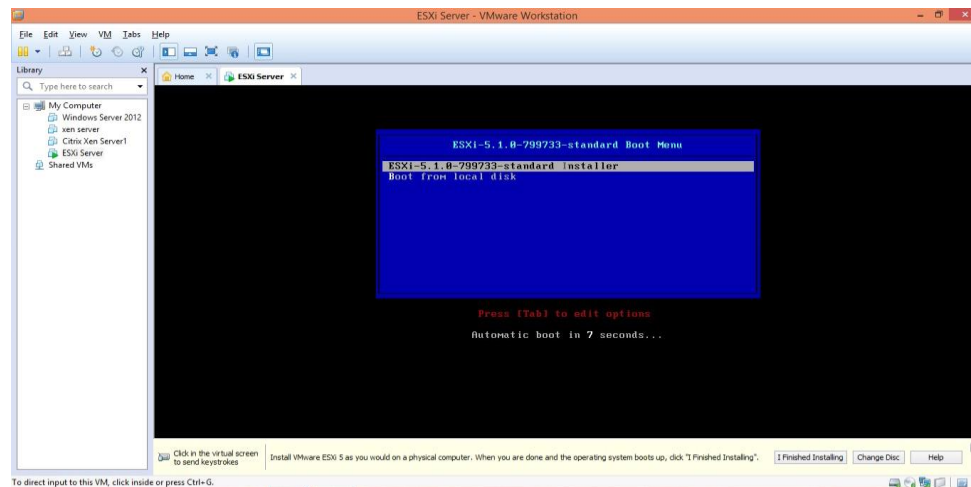


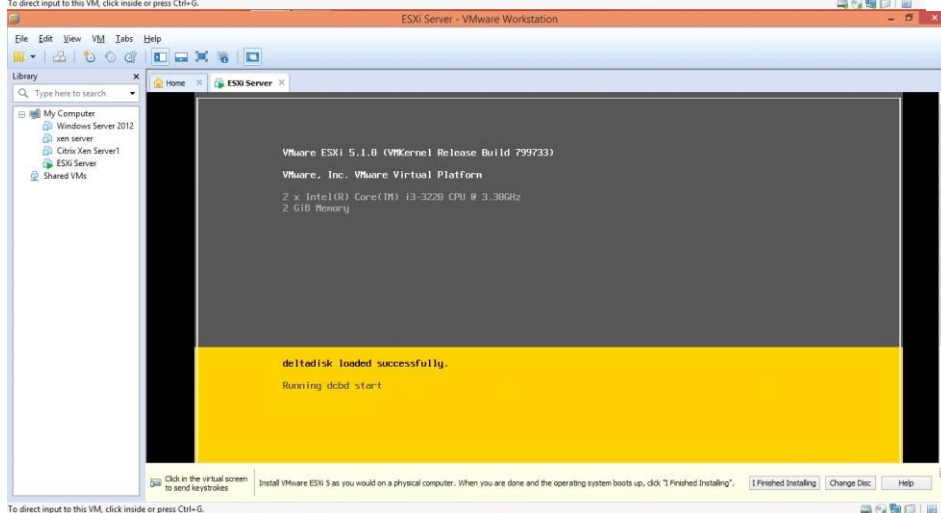
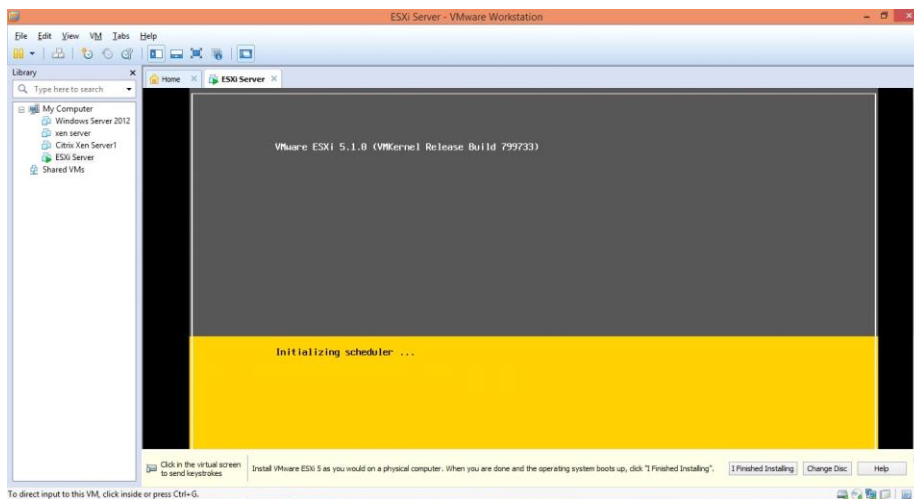
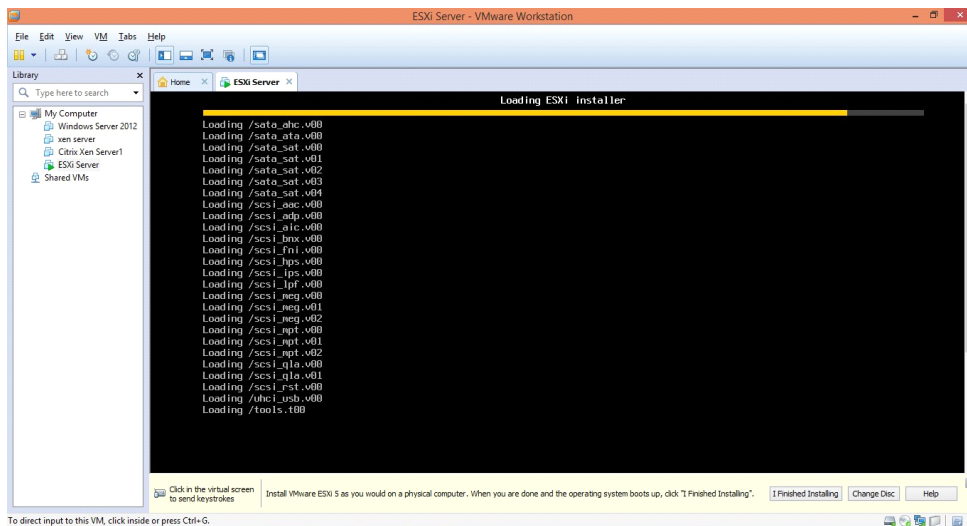


At the final window click on **“Finish”** button.

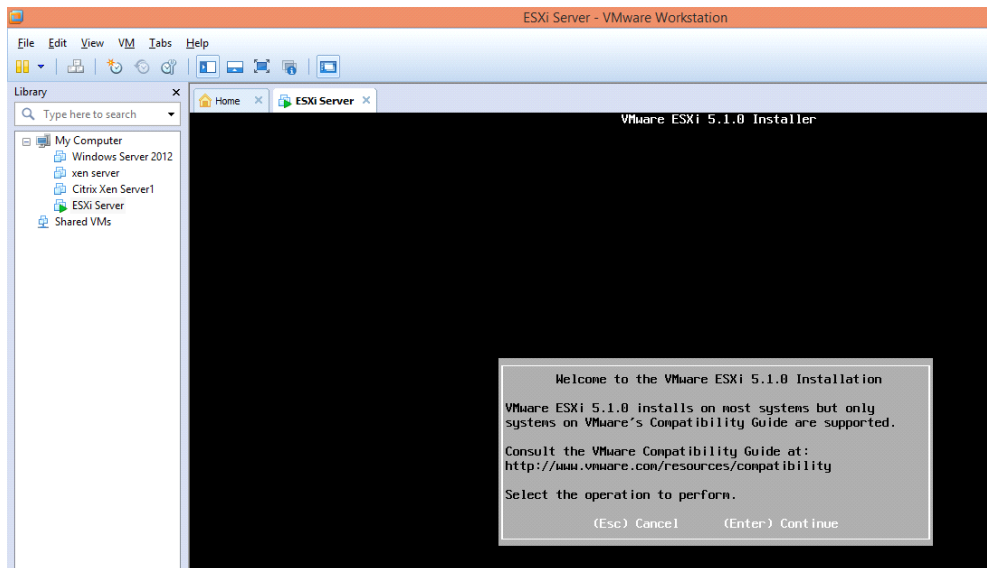


Creation of Virtual Machine is in progress...

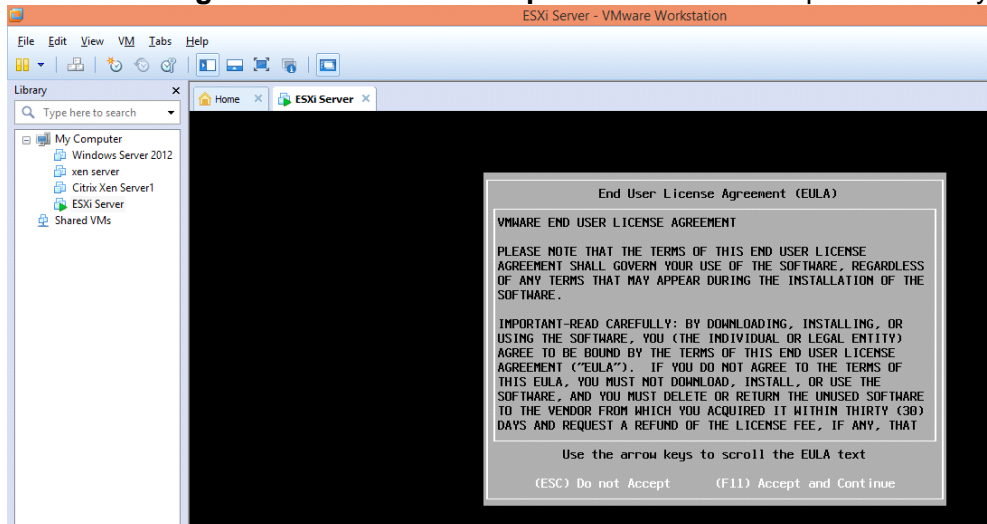




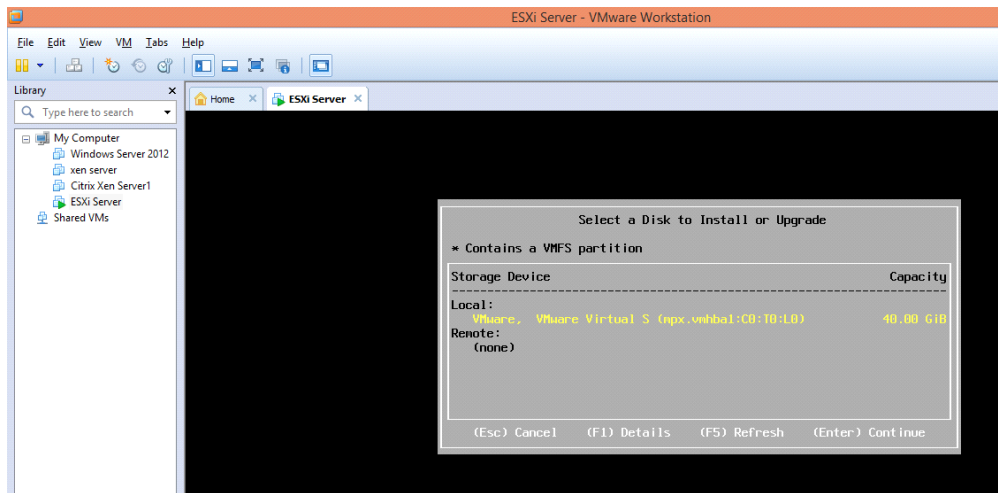
In the following screen click on **Continue** or press **Enter** key.



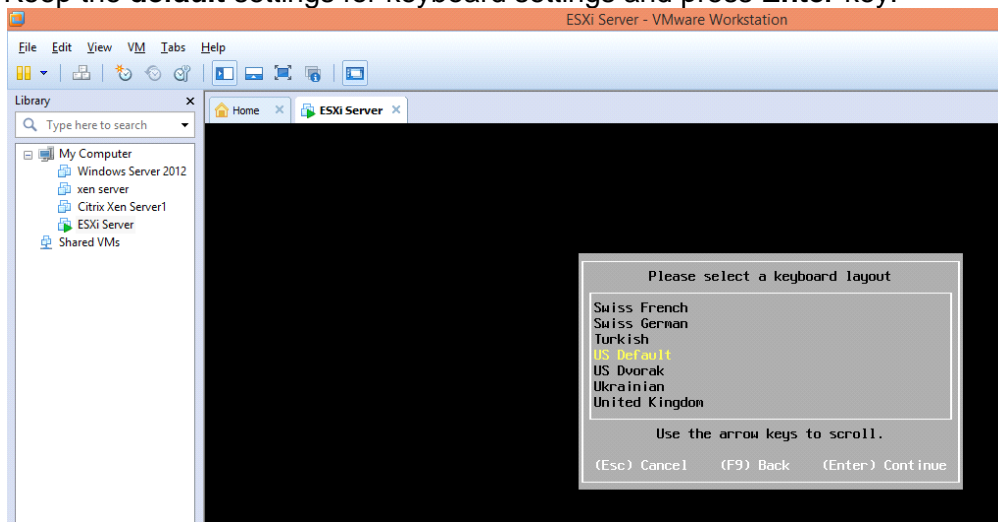
For **License Agreement** click on **“Accept and Continue”** or press **F11** key.

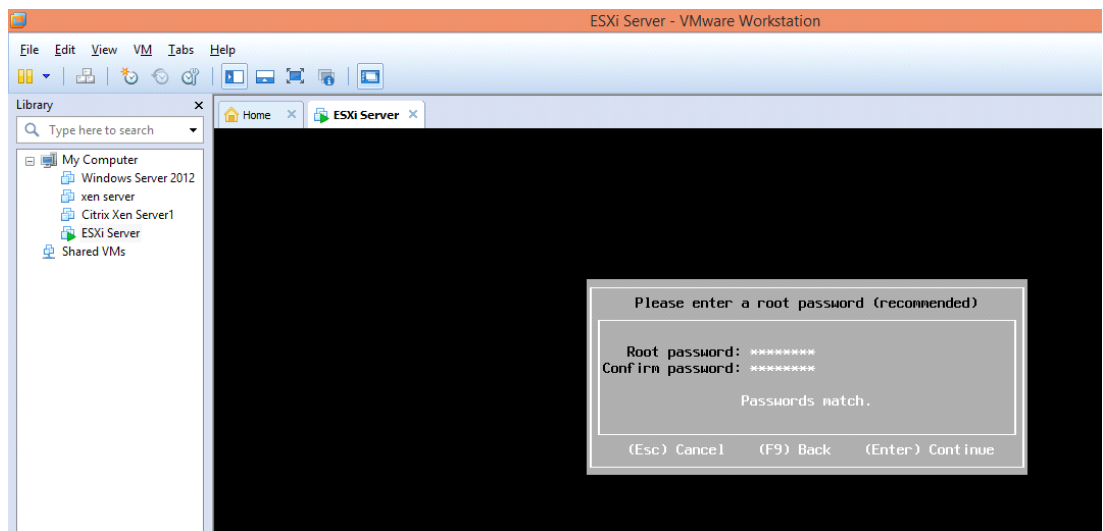


For Installation press **Enter** key.



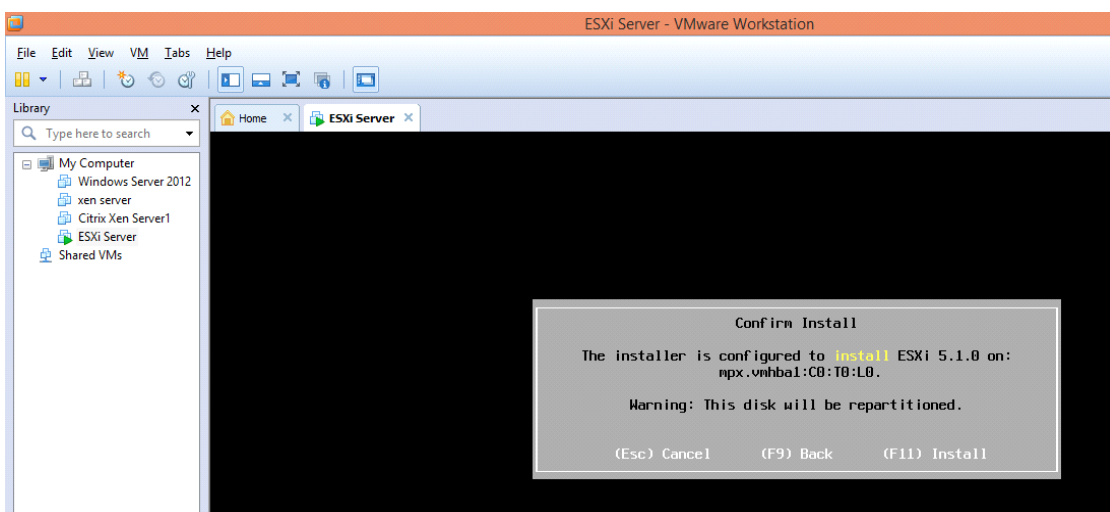
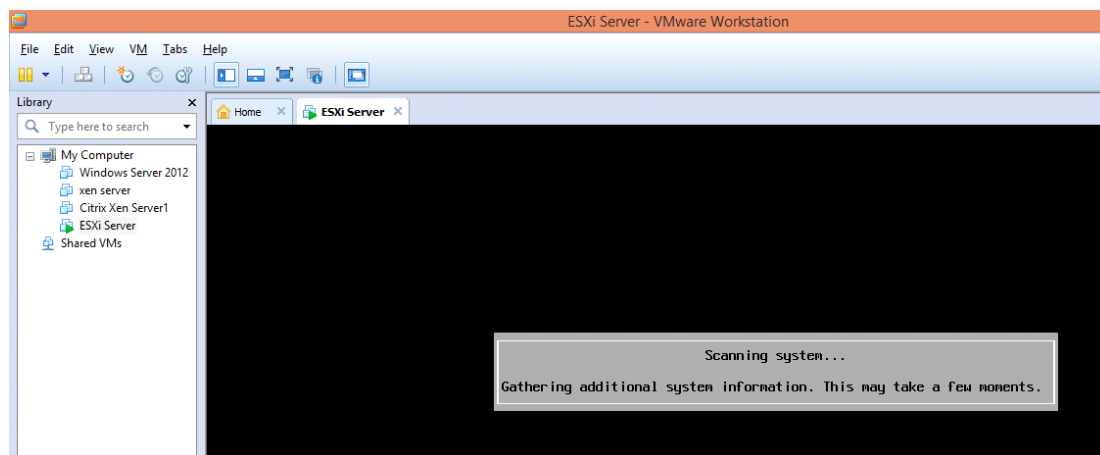
Keep the **default** settings for keyboard settings and press **Enter** key.





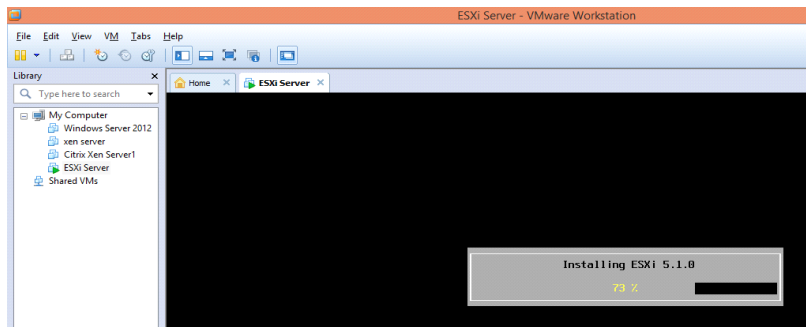
Enter

the **root and confirmation password** and click on **Continue** or press **Enter** key.
The Installation is in progress...

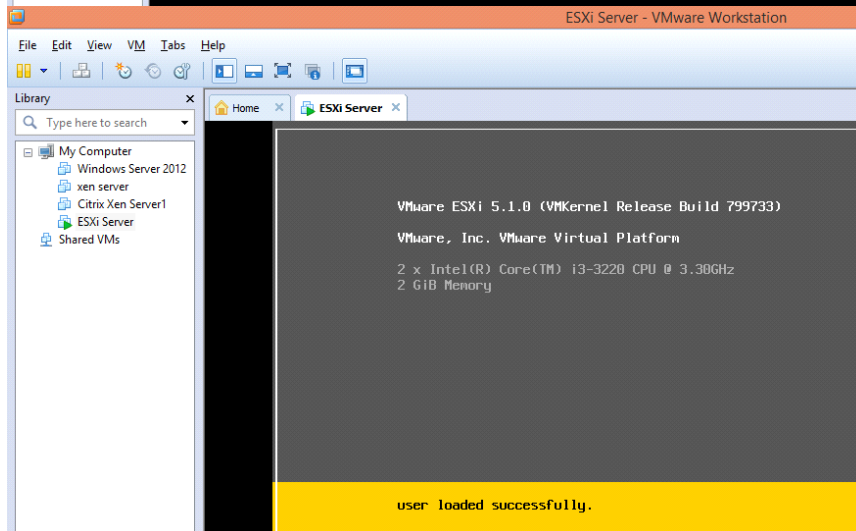
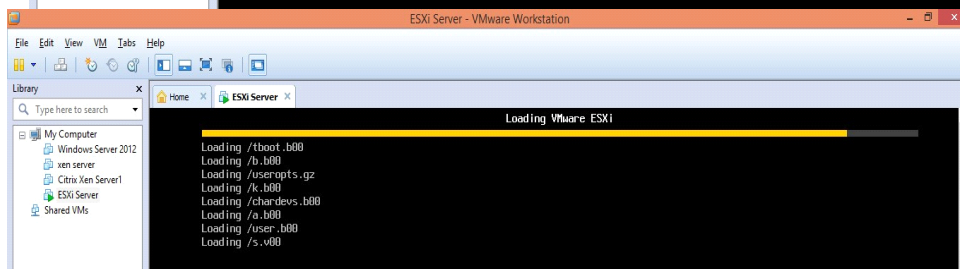
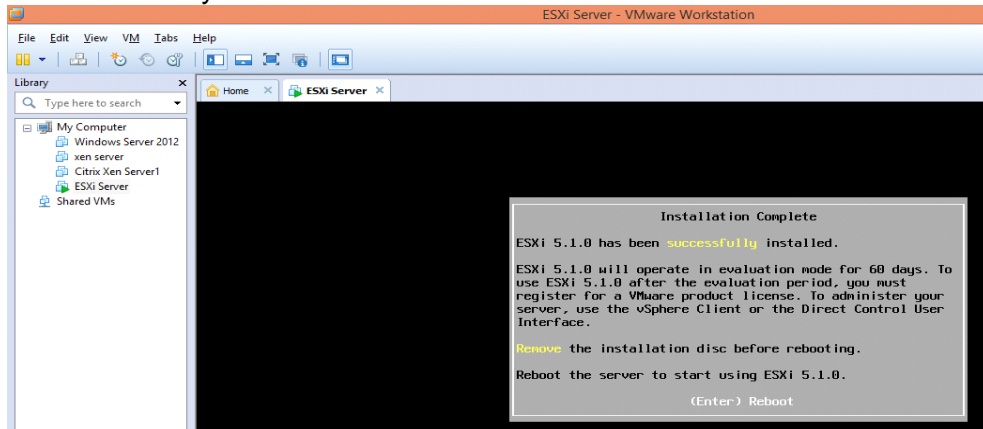


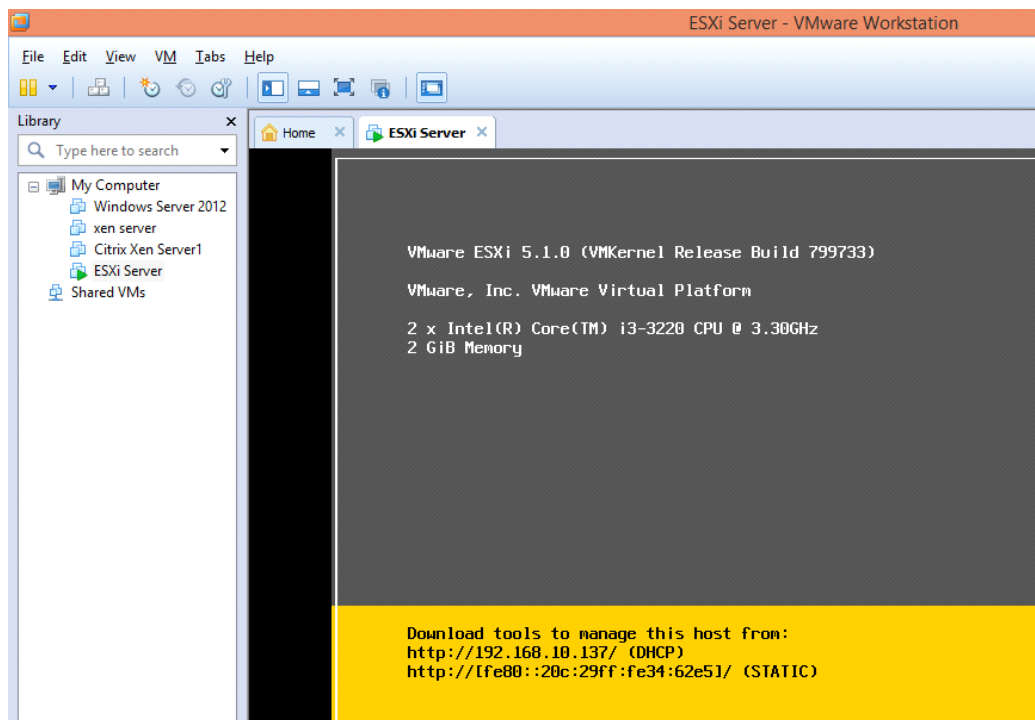
Press
F11 key to Install.

Installing **ESXi 5.1.0**...



Press **Enter** key to Reboot.

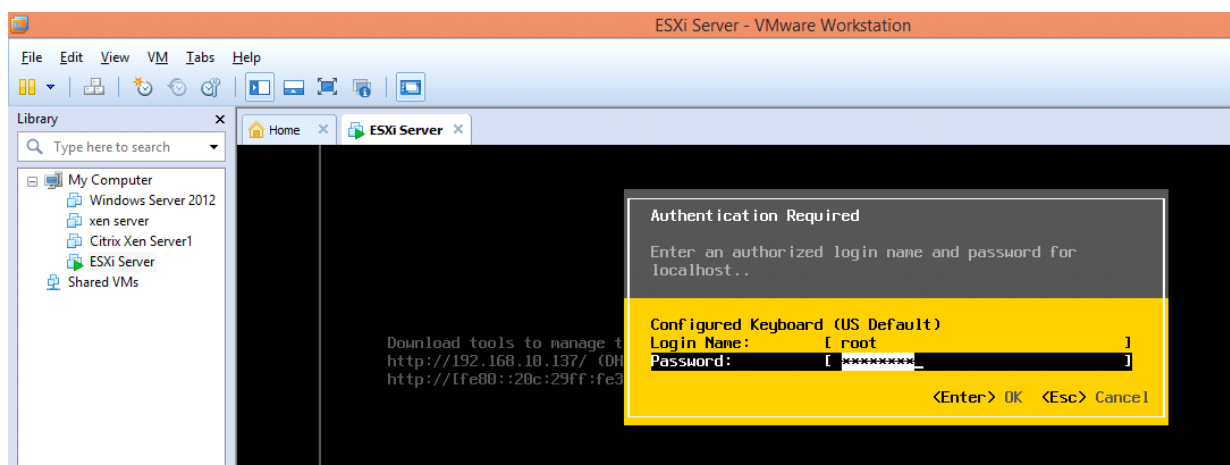
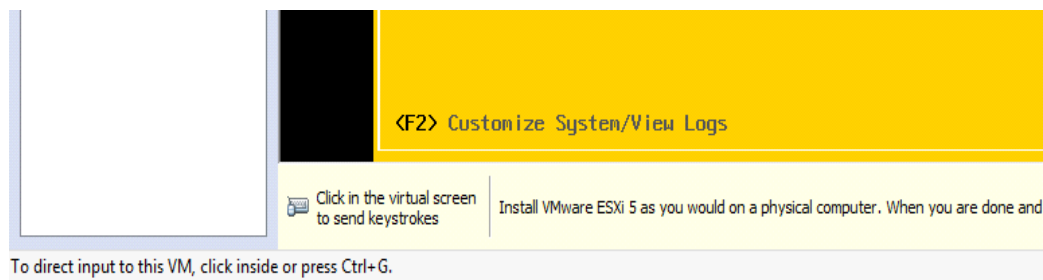




Note the

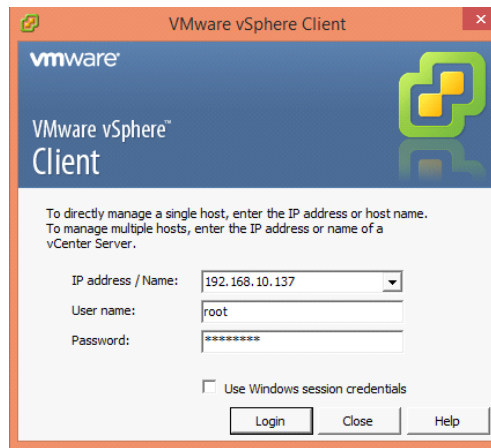
DHCP IP Address. Here it is-192.168.10.137

Press the **F2** key for customizing system as it is shown at the bottom of the VM.

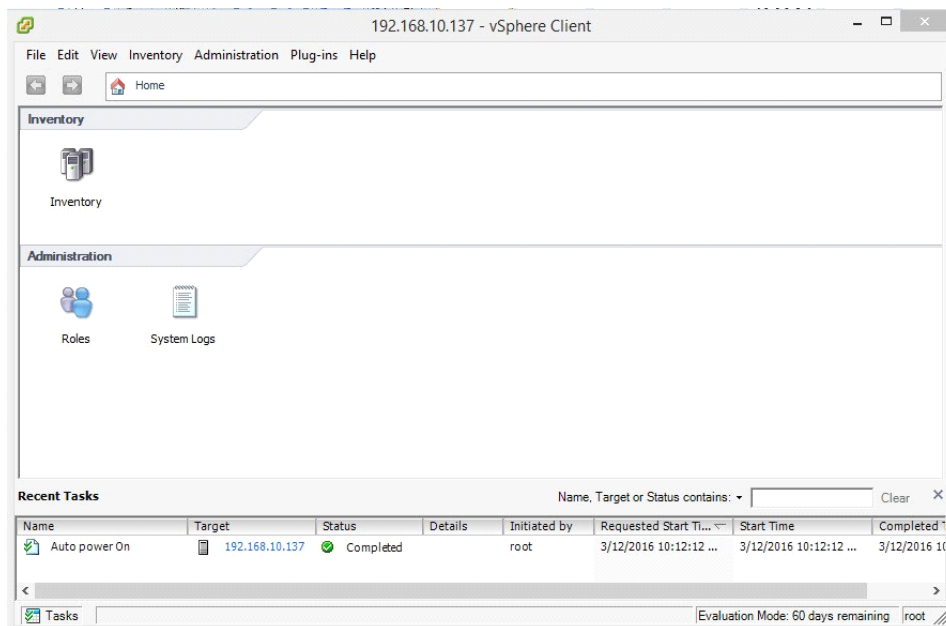


Enter the username as **root** and the **root password** (which was used earlier).

Now start the **VMware vSphere Client**. Enter the IP address (*DHCP IP address of ESXi Server*), user name as **root** and the **same password** as the **ESXi System**. Click on **“Login”** button.

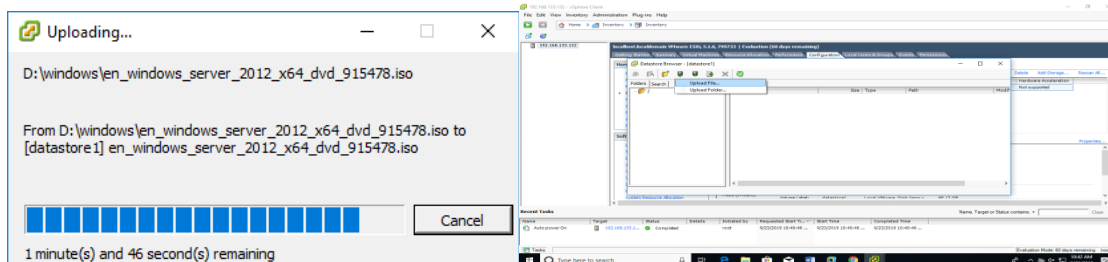
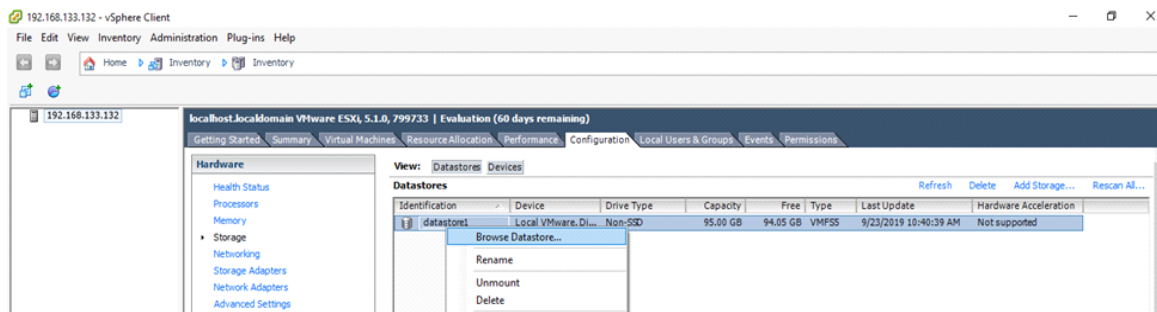


Click on the **Ignore** for the Security Warning.



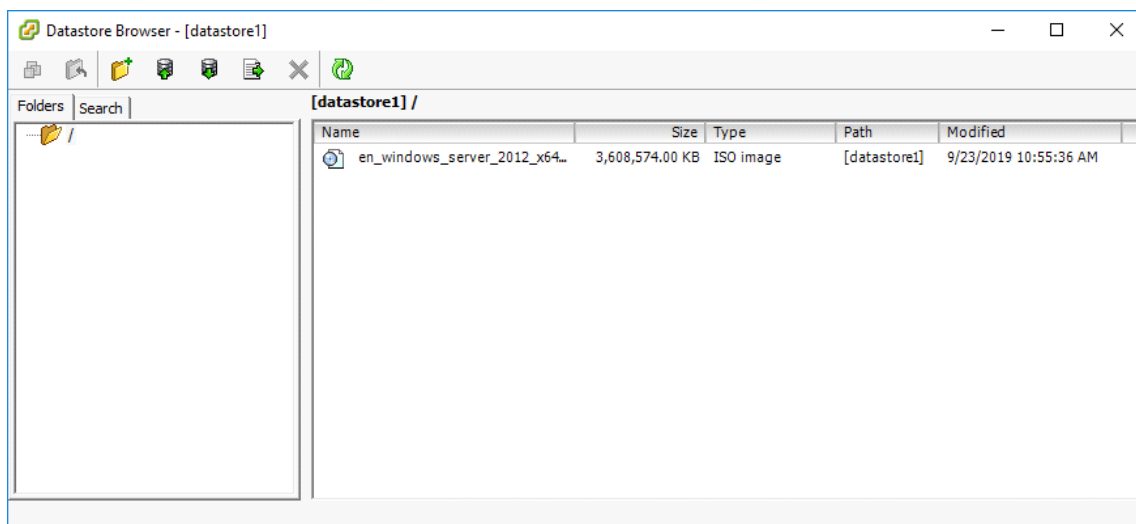
After login the **VMware vSphere Client** looks like the following image. At the bottom of this screen the **connectivity** of VMware vSphere Client where the **target IP address** is the **ESXi Server's DHCP IP address**. Click on the **Inventory**.

In **Configuration** tab click on **Hardware Storage**. Right click on **"datastore1"** and select **"Browse Datastore..."**.

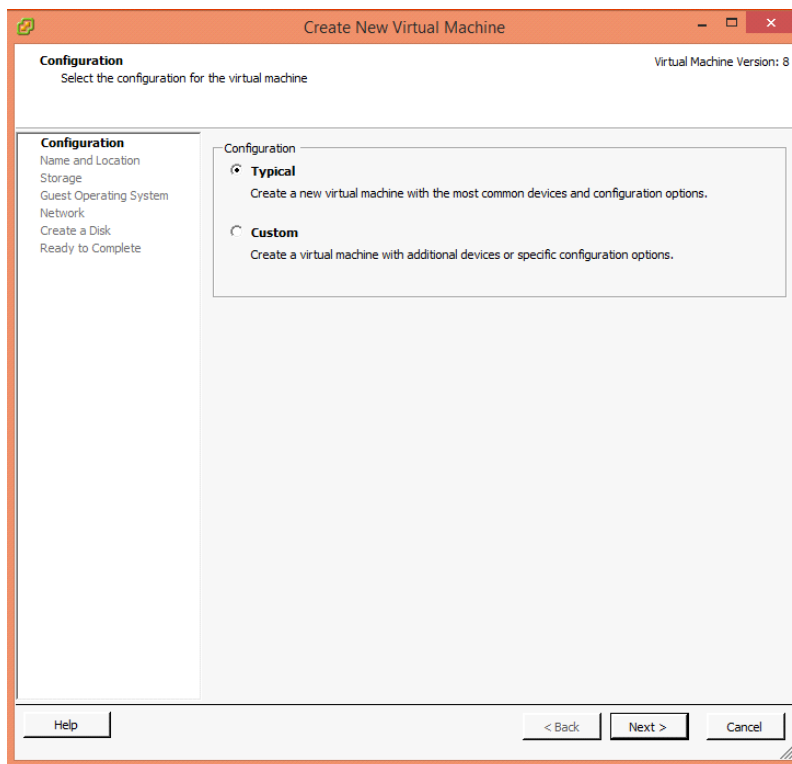
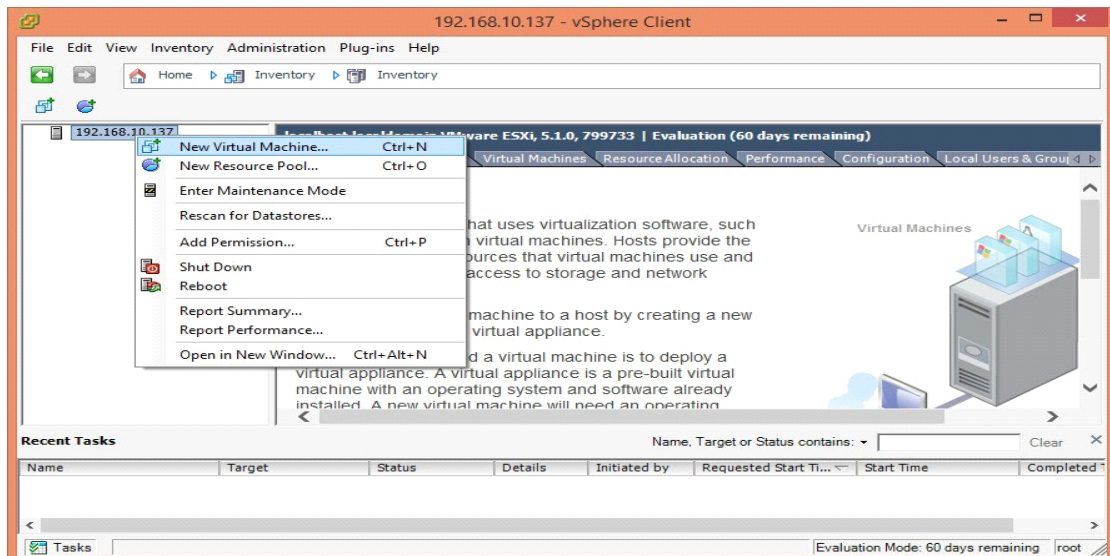


In the **Datastore Browser – [datastore1]** window click on **Upload files to this datastore** tool and select **“Upload File...”** option.

Upload the **“Microsoft Windows Server 2012”**.



It shows the IP Address (**192.168.10.137**) listed on the left pane. **Right click** on the IP address and select the option **“New Virtual Machine...”**.



In the **Create New Virtual Machine** window select the **Typical** option and click on “**Next**”.

Give a name to the Virtual Machine. Here it is given as **ESXi VM**. Click on the “**Next**” button.

Create New Virtual Machine Virtual Machine Version: 8

Name and Location
Specify a name and location for this virtual machine

Configuration
Name and Location
 Storage
 Guest Operating System
 Network
 Create a Disk
 Ready to Complete

Name:

Virtual machine (VM) names may contain up to 80 characters and they must be unique within each vCenter Server VM folder.
 VM folders are not viewable when connected directly to a host. To view VM folders and specify a location for this VM, connect to the vCenter Server.

[Help](#) [< Back](#) [Next >](#) [Cancel](#)

Create New Virtual Machine Virtual Machine Version: 8

Storage
Select a destination storage for the virtual machine files

Configuration
Name and Location
Storage
 Guest Operating System
 Network
 Create a Disk
 Ready to Complete

Select a destination storage for the virtual machine files:

Name	Drive Type	Capacity	Provisioned	Free	Type	Thin Pro
datastore1	Non-SSD	35.00 GB	971.00 MB	34.05 GB	VMFS5	Supporte

☐ Disable Storage DRS for this virtual machine

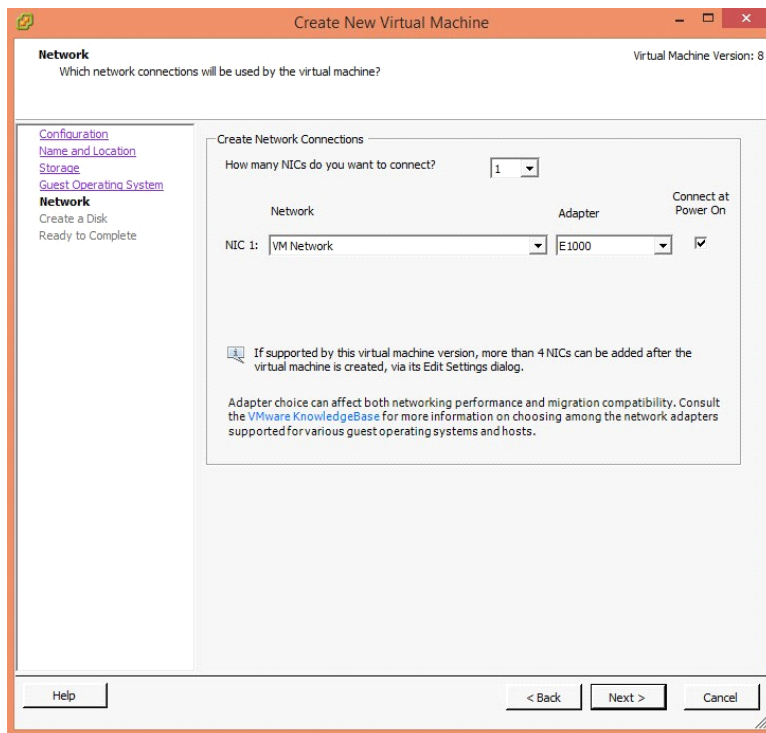
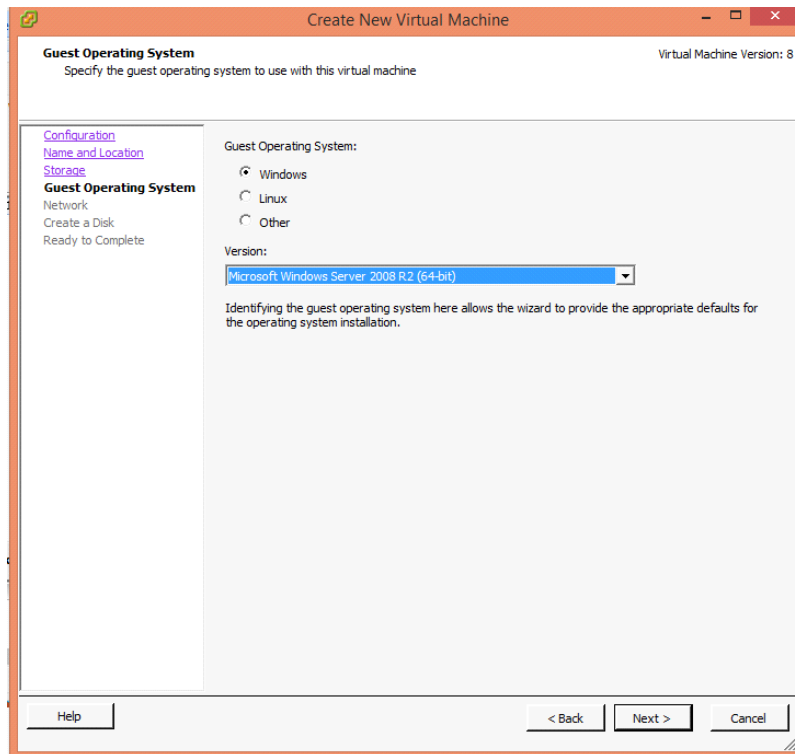
Select a datastore:

Name	Drive Type	Capacity	Provisioned	Free	Type	Thin Provi
------	------------	----------	-------------	------	------	------------

[Help](#) [< Back](#) [Next >](#) [Cancel](#)

In the next screen keep the settings **default** for **Storage** and click on **“Next”**.

Select the **Guest OS** as **Windows** and Version as **“Microsoft Windows Server 2008 R2 (32- bit)”**.



Leave the **Network** settings **default** and click on “Next”.

Choose the **Disk** space (depending on the available space of user’s system. Here it is 1GB) of the VM in **GB**. Click on the “**Next**” button.

Create New Virtual Machine Virtual Machine Version: 8

Create a Disk
Specify the virtual disk size and provisioning policy

[Configuration](#)
[Name and Location](#)
[Storage](#)
[Guest Operating System](#)
[Network](#)
Create a Disk
Ready to Complete

Datastore:

Available space (GB):

Virtual disk size:

☒ Thick Provision Lazy Zeroed
☐ Thick Provision Eager Zeroed
☐ Thin Provision

Create New Virtual Machine Virtual Machine Version: 8

Ready to Complete
Click Finish to start a task that will create the new virtual machine

[Configuration](#)
[Name and Location](#)
[Storage](#)
[Guest Operating System](#)
[Network](#)
[Create a Disk](#)
Ready to Complete

Settings for the new virtual machine:

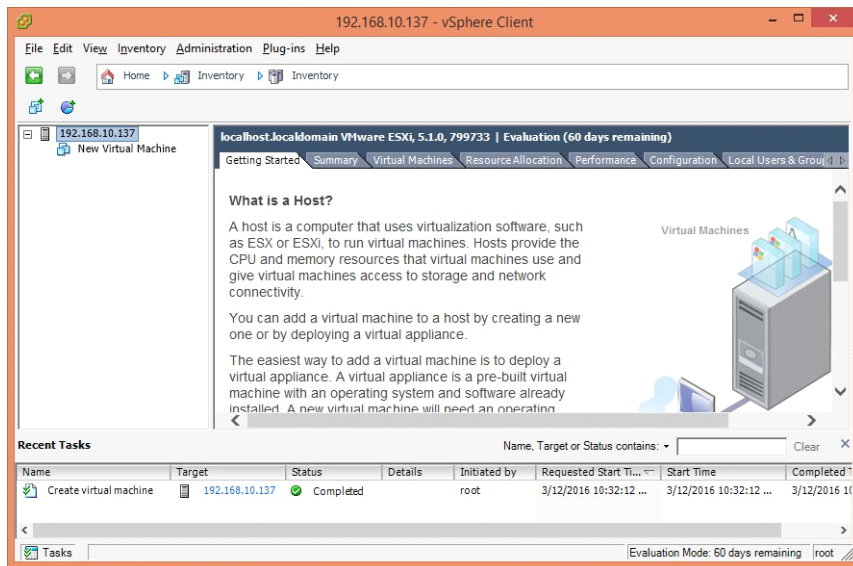
Name:	New Virtual Machine
Host/Cluster:	localhost
Datastore:	datastore1
Guest OS:	Microsoft Windows Server 2008 R2 (64-bit)
NICs:	1
NIC 1 Network:	VM Network
NIC 1 Type:	E1000
Disk provisioning:	Thick Provision Lazy Zeroed
Virtual Disk Size:	24 GB

☐ Edit the virtual machine settings before completion

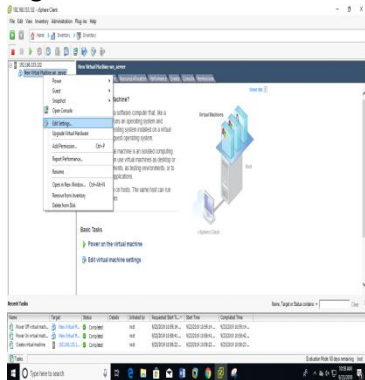
Creation of the virtual machine (VM) does not include automatic installation of the guest operating system. Install a guest OS on the VM after creating the VM.

At the final screen click on **“Finish”** button.

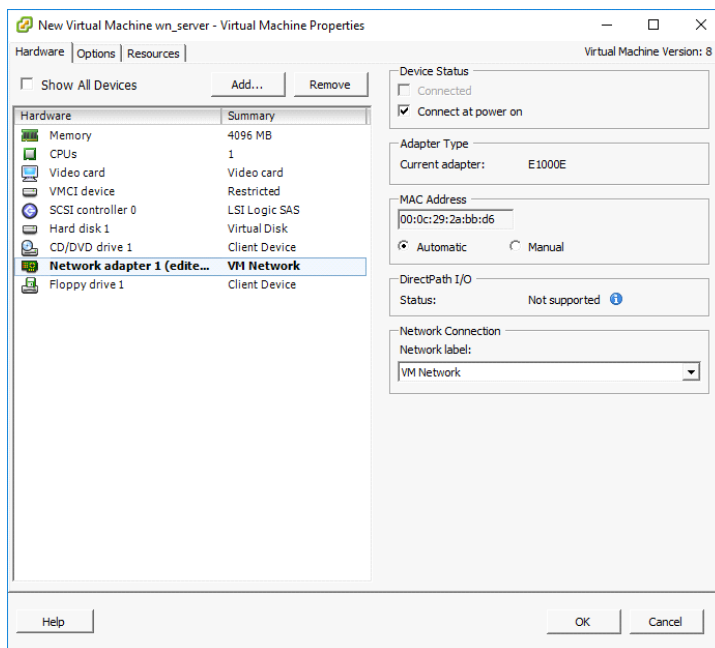
The new created Virtual Machine is listed under the **IP Address**.



Right click on virtual machine Edit settings Network adapter.

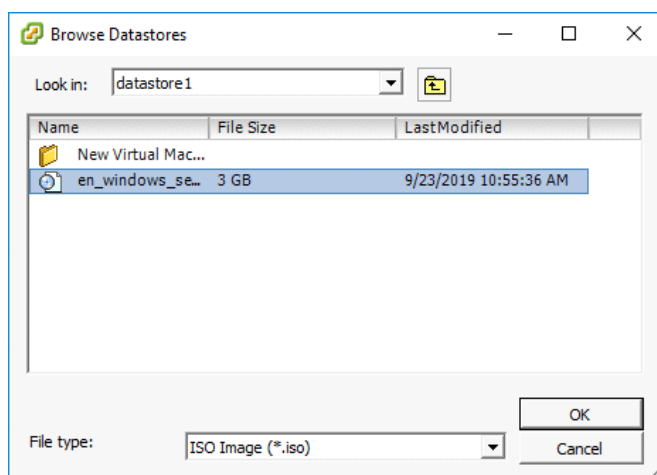
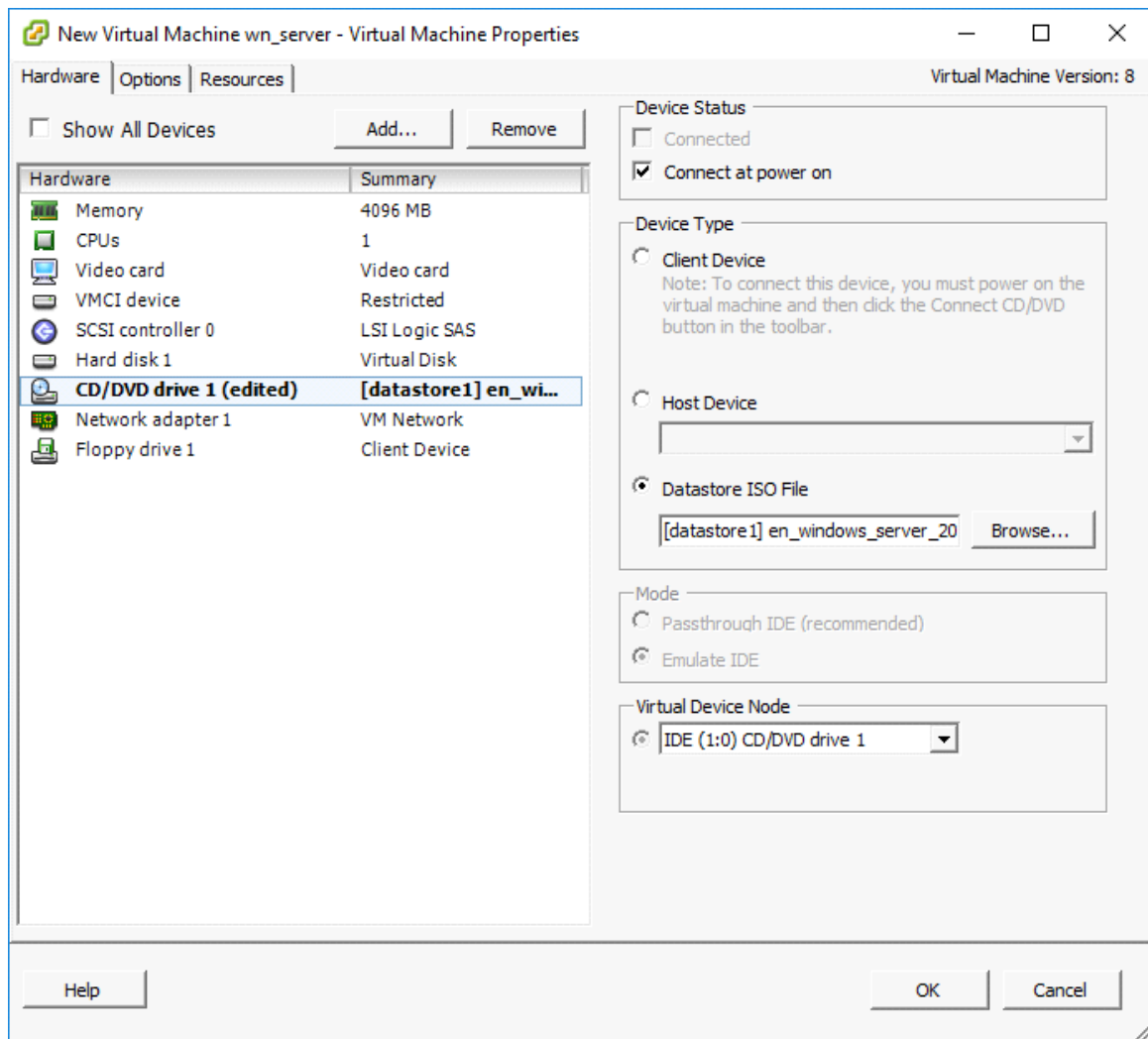


Right click on virtual machine Edit settings Network adapter "Check on Connect at power on".

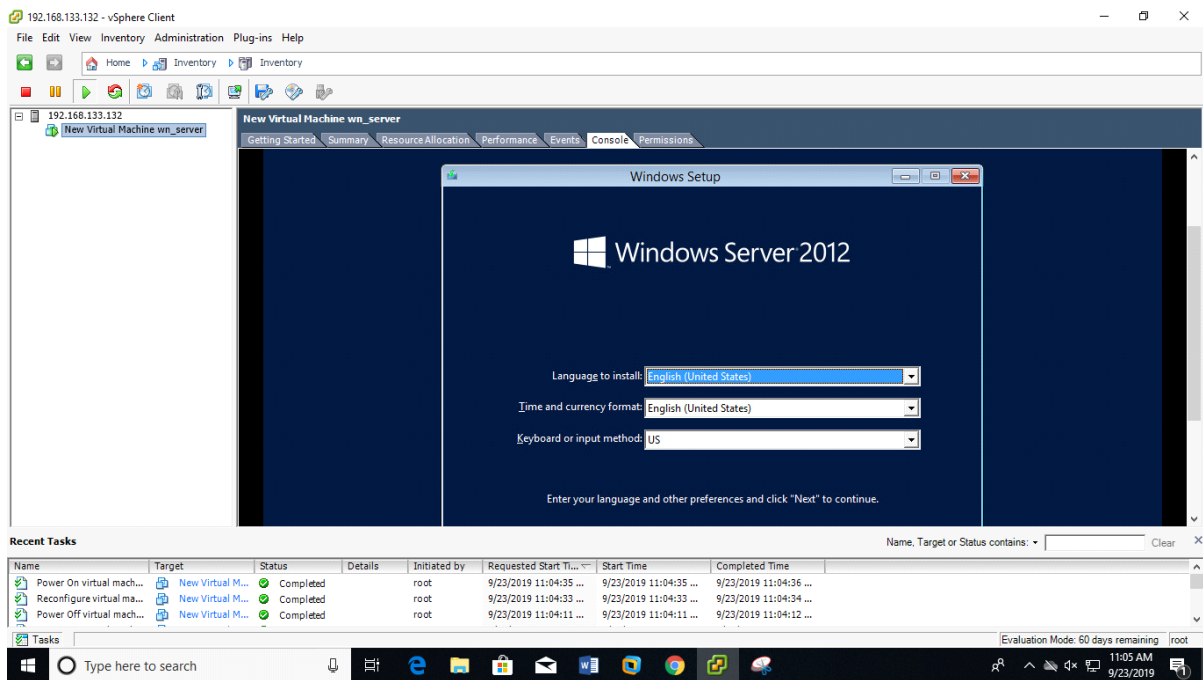
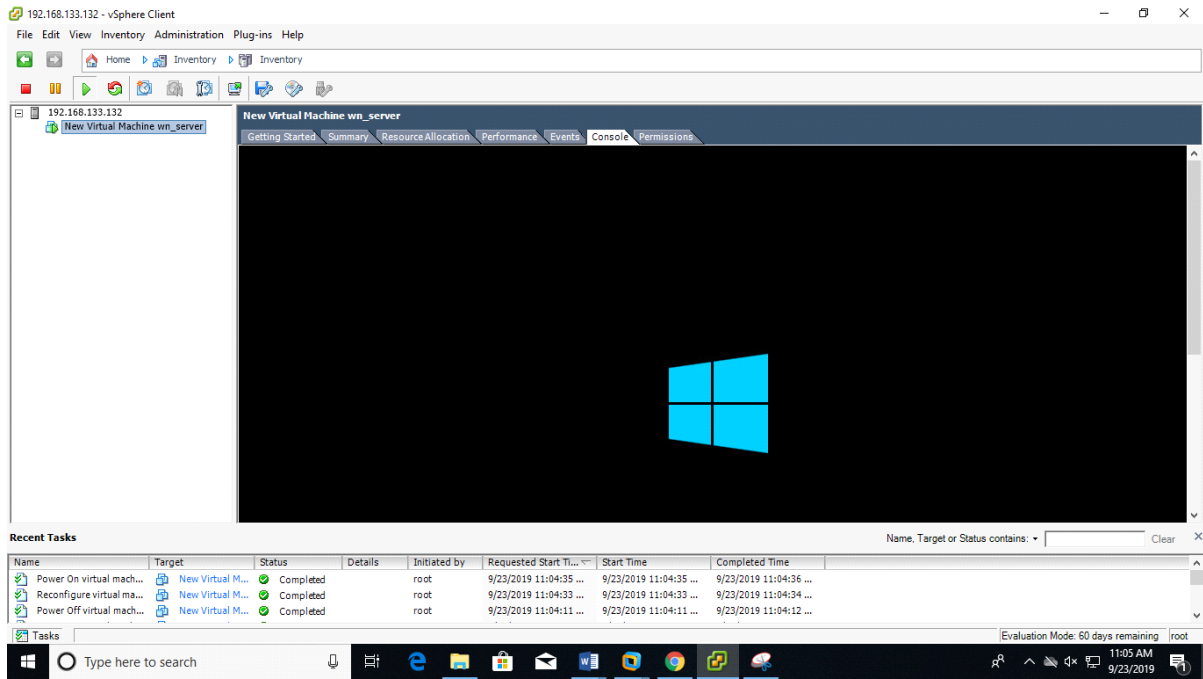


Right click on virtual machine Edit settings CD/DVD Drive Check on Datastore ISO file and browse the iso

"Check on Connect at power on".



Power on VM



PRACTICAL NO. 3